

# Instructions

## MRT Engineering RACE control arm kit BMW 3-series

### Kit includes (pre-assembled parts):

- 2x DTM style control arms with spherical bearings
- 2x Steering adapters (not included in E30 M3 kits)
- 2x Front subframe mounting brackets
- 2x Rear mounting brackets



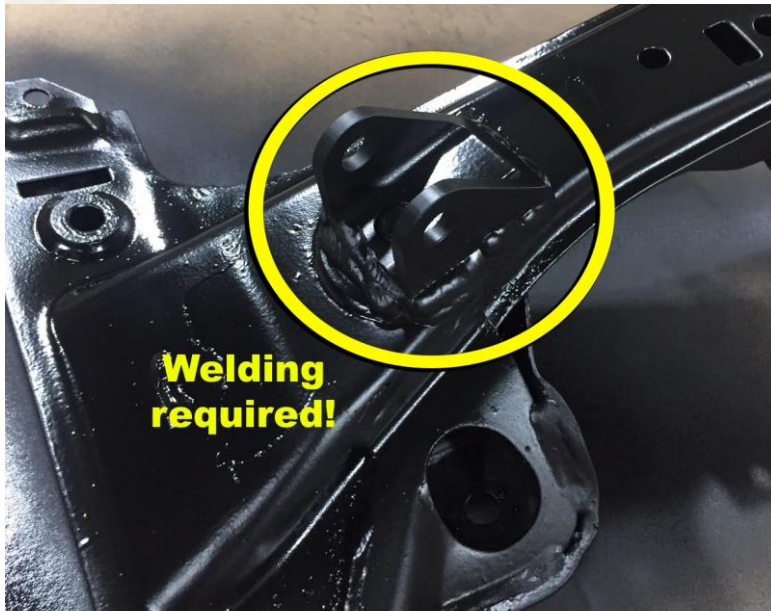
**MRT**  
MAGNUS RACING TEAM

### Notes:

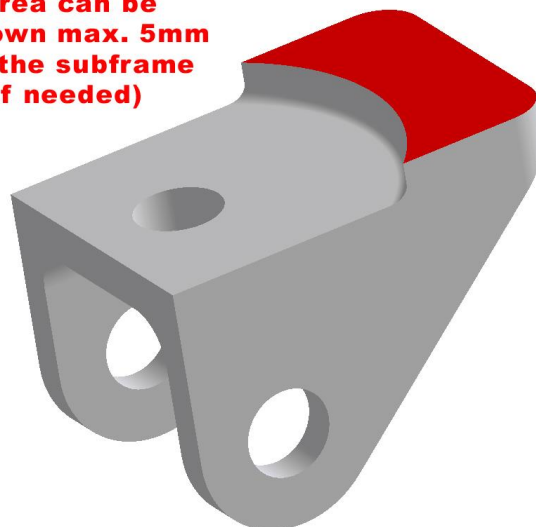
- Fits only BMW E30, E36 or E46 chassis with strut mount -type sway bar
- Minimum wheel size 15" (370mm inner diameter) on E30 strut, 16" on E36 and E46 struts
- Steering reducers highly recommended
- Racing part with NO warranty, not for use on public roads
- Manufacturer disclaims all liability for direct, indirect, incidental or consequential damages, including damage or loss of equipment, cost of purchase or replacement of goods, accident or injuries, or claims of the purchaser that result from the use of the part

Shorten the bolt if necessary to allow free movement of the rod end





**Colored area can be ground down max. 5mm to match the subframe contour (if needed)**



**Min. thread 15mm**



**NOTE:**

- Remember to check bolt tensions after first 100km/miles
- Check bolt tensions occasionally
- Check control arm kit condition before and after every trackday
- Regular check, cleaning and maintenance can increase control arm kit lifetime significantly
- If you have any questions, problems etc, please contact us:  
[info@mrtengineering.fi](mailto:info@mrtengineering.fi)